

ISP 1600 for Fall 2007

Web.Edu: How Internet Courses Work

Course web site:

<http://www.is.wayne.edu/drbowen/WebEduF07>

Third meeting

September 22, 2007

Class names

- Initial the sign-in sheet
- Review of names
- Pictures (not a requirement but you may not like the alternative, will be repeated next two weeks)

Web sites for this class

- **Public** (www.is.wayne.edu/drbowen/WebEduF07)
 - All handouts or static materials (syllabus, notes, exam questions, etc.)
 - Two links to Moodle (why two links?)
- **Moodle**
(techtools.culma.wayne.edu/moodle OR [DIRECT... techtools.culma.wayne.edu/moodle/course/view.php?id=32](http://techtools.culma.wayne.edu/moodle/course/view.php?id=32))
 - Interactive, where you do something, such as discuss the course, turn in homework, etc.
 - More detail coming up

Moodle

- Moodle how-to last Saturday. (makeup?)
- What is there:
 - Participants (list of class)
 - Online users (class members online now)
 - Chat
 - Edit Profile
 - Forums
 - Introduce Yourself!
 - Starting out (initial thoughts on taking this course)
 - Course discussion (ongoing throughout the semester)

Moodle (cont'd)

- What is there (cont'd):
 - Study Schedule (turn in assignment online, using Moodle, by October 6)
 - Recent activity (everyone, since the last time)
 - Under Administration, Activity report (yours)
 - Link back to course web site
 - More coming (grades)

I know this is only one credit,
but...

- There is some work for this course!
- Some people looked around a lot inside Moodle but no postings in Forums
 - Some need to finish up “Introduce Yourself!”
 - Post in “Starting out”
 - Weekly (1 to 2) posts in “Course discussion”

Overview

1. What is in an online course?
 - a. Almost always
 - b. Sometimes
2. What is different about online courses?
“Autonomy and Responsibility”
 - a. The online discussion is the star
 - b. If you start to feel you are out there all alone, and you run into any trouble, then you will probably do badly or drop out

Overview (continued)

3. Technical issues for online students
 - a. This is what concerns most students (is my computer good enough, are my Internet skills good enough ?) but...
 - b. There are a lot of things that *might* go wrong. Each one is rare.

What can be in an online course?

- Fairly common
 - Textbook. Most of your reading is *not* online
 - Web site for course
 - Required class meeting(s), especially at WSU
 - Hybrid / Blended courses have more meetings
 - Online discussion forum
 - Synchronous (chat - rare) Vs asynchronous
 - Online way to turn work in & get it back
 - Can make you nervous, but actually more secure

What can be in an online course?

- Maybe yes, maybe no
 - Online web tests, reports, forms
 - In-person tests
 - Optional course meetings
 - Student web pages or blogs
 - Online reading
 - Online work groups
 - Online audio and video (multimedia)

What can be in an online course?

- Maybe yes, maybe no (continued)
 - Special software (rare in DIS)
 - Spreadsheet, database
 - Lotus Notes for Business
 - Graphics
 - Guests
 - Assigned outside links
 - PDA use (WSU Medical School)
 - Online evaluation (SET at WSU)

About the Internet

- URL – Universal Resource Locator
 - “web address” for a web page
 - Home page – designed as beginning web page for a site
 - HTML – Hypertext Markup Language – how web pages are formatted.
 - Example: `Wow!` makes **Wow!** (bold)
 - Web pages are computer files formatted with HTML and having the extension htm or html
 - A web site is a group of related web pages.

About the Internet

- Four ways to get to a web page
 - Type in the URL
 - Click on a text or graphical link
 - History list (only on that computer)
 - OK – Unorganized, can get pushed off if list full
 - Make a favorite (IE) or bookmark (Netscape, Mozilla, Firefox) (only on that computer)
 - Better – can organize, keep on list

Internet: Make Favorite or Bookmark

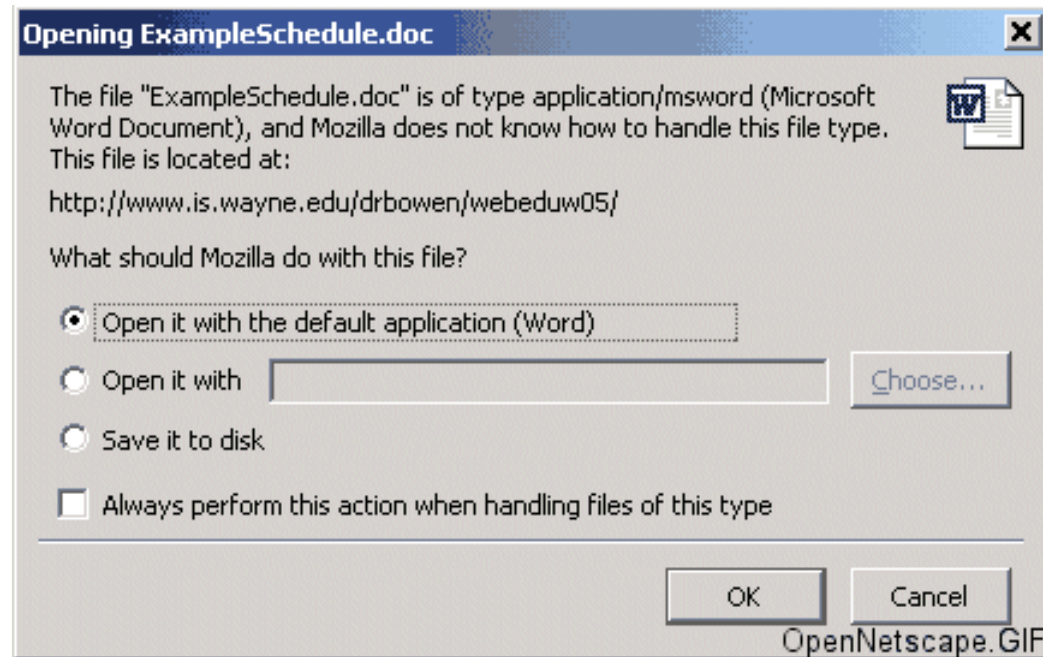
- Go to page
- Click on menu item Bookmarks >> Bookmark This Page (Netscape, Mozilla, Firefox – “NMF”)
OR
Favorites >> Add to Favorites (IE) then (IE) accept name or change it

Internet: Make Favorite or Bookmark (cont'd)

- Advanced – move up and down on list or make folders, put bookmarks in them.
Graphical – drag them around on then screen
 - (NMF): Click on Bookmarks >> Manage Bookmarks
 - (IE): Click on Favorites >> Organize Favorites

Internet: Download File

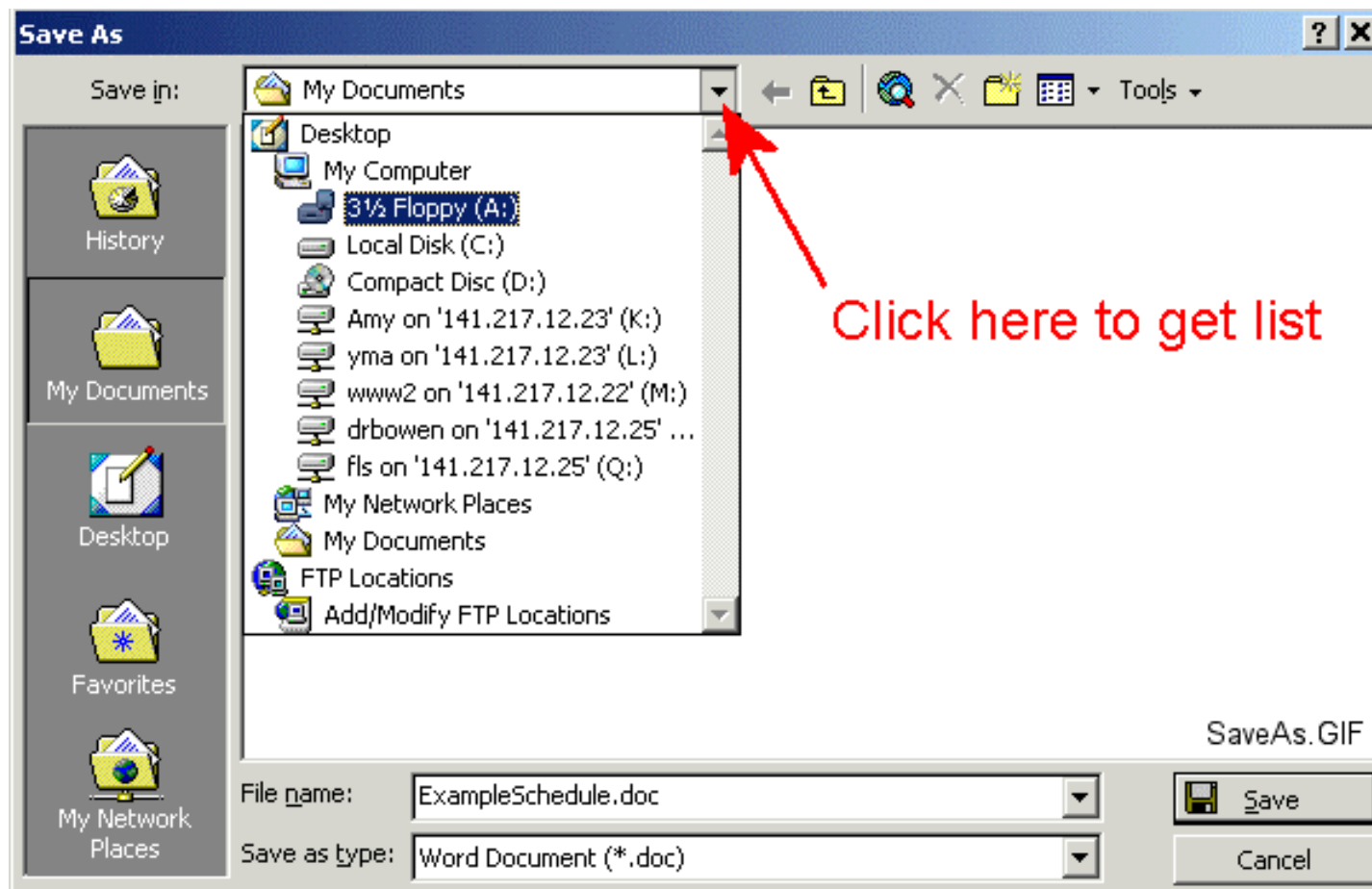
- Download: copy file from Internet to your computer
- Click on link to file
- (NMF)



Internet: Download File (cont'd)

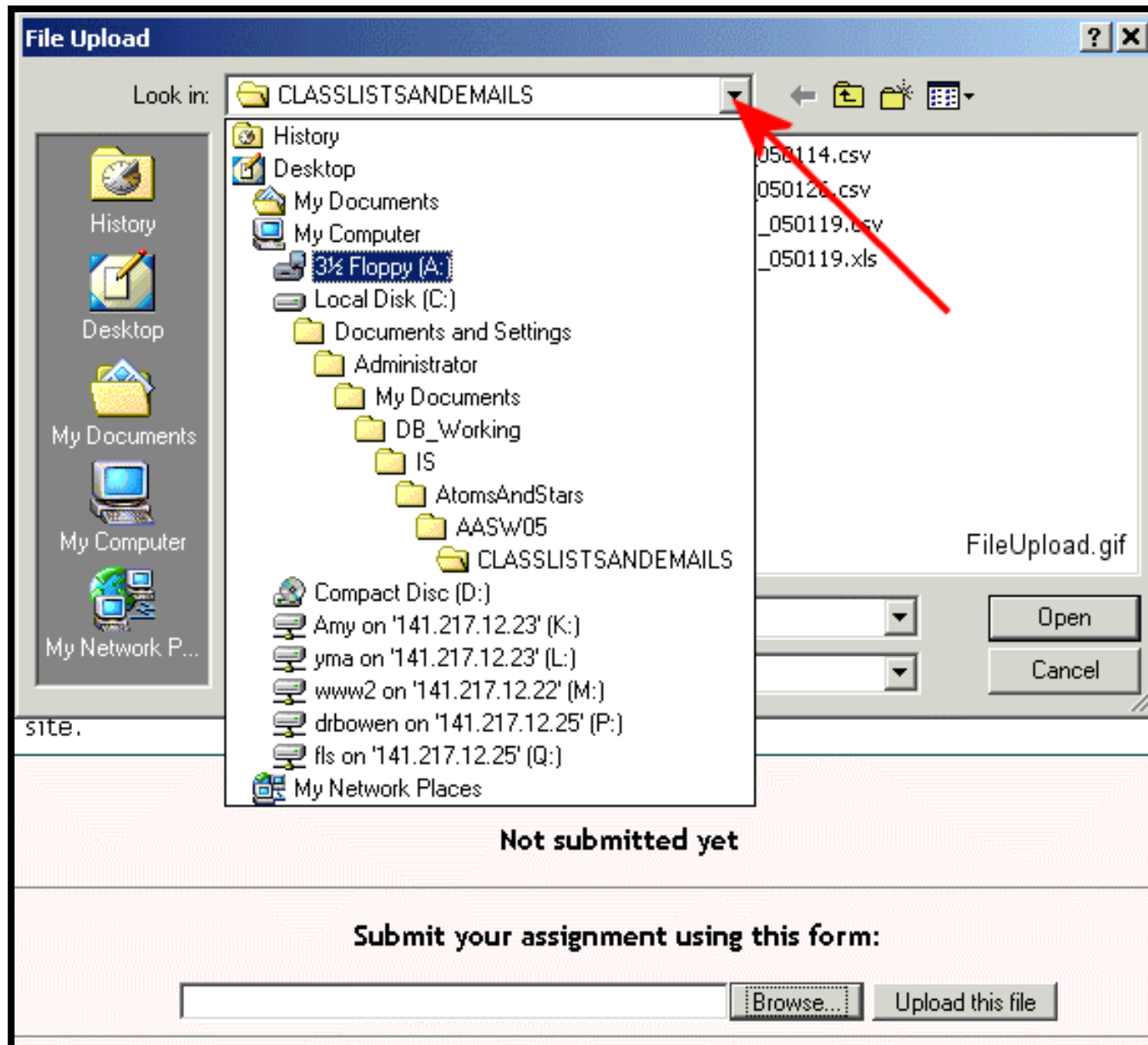
- (IE) Will generally open file in IE, then pick IE menu item File >> Save As

Internet: Download File (cont'd)



Internet: Upload File

- Upload – copy a file from your computer to Internet. Here, in Moodle.
 - Like attaching a photo to an email message
- Go to tool to upload or turn in assignment (Turn in Study Schedule)
- Click on Browse, see next screen



Internet: Upload File (cont'd)

- After that, click on Upload this file
- End of Upload

Life on the Internet

- It's a jungle out there – more later
 - Don't use easy passwords
 - Keep antivirus software up to date
 - Scams, phishing, hackers
 - Internet security suite – includes firewall, data safekeeping
 - Don't click on free offers that are too good to be true

Life on the Internet (cont'd)

- It's a jungle out there – more later
 - Don't open email attachments from someone you don't know
 - If you are going to click on a link in an email, hold the mouse over the link first, and see where you are going
 - In a lab, log out whenever you can
 - Always log out and close your browser if someone else may use the computer after you.

WSU Email

- Your WSU email (“aannnn@wayne.edu”)
 - Full Internet email – messages to any Internet email address (has “@” in it)
- If you do not use it, forward it to an account you do use
 - Do this in Pipeline with account button
- Conduct at least one test of forwarding – many people mistype email address
- Keep forwarding up to date!



WSU Email

- Cleaning up your WSU email (all email systems have storage limits)
- When indicator nears 100%, definitely time to act!
 1. Select messages to delete (bulk selection)
 2. Mark deleted (undelete)
 3. Purge (it's not gone until the purge)

For next week

- Set up Moodle account if not already done
- Web Hub?
- In textbook, finish Chapter 4
- Be ready for photo if you put it off today
- Post in “Starting out”
- One or two posts to “Course discussion”
- Start work schedule

Done!